

PRINTRONIX®

P8000 Line Matrix Printers



Flexible Design | Adaptable Functionality | Manageable Savings



P8000 Cartridge Printers Deliver New Designs, Enhanced Convenience and Lower Operating Cost

Printronic introduces design enhancements and improved functionality with the P8000 Cartridge Printer series to achieve the broadest flexibility, greatest compatibility and lowest ownership cost of virtually any other print technology. The series builds upon the workhorse tradition of all Printronic line matrix technology delivering maximum uptime, low cost of ownership, and reliable performance. The P8000 series is the ideal solution for buyers looking to minimize operating expense without sacrificing output reliability, regardless of operating environment.



FLEXIBLE DESIGN

Printronic modified its industry-leading line matrix technology to address evolving user requirements.

- **Modular enclosures** occupy a smaller footprint while delivering location and installation flexibility
- **Sheet metal construction** for increased durability and better acoustics
- **New user interface** with larger LCD screen, graphical display and intuitive menu navigation
- **Remote printer diagnostics** let you monitor printer status and remotely configure settings & firmware

ADAPTABLE FUNCTIONALITY

The **P8000** Cartridge series adapts to almost any supply-chain or back-office environment.

- **More models** to fit your unique requirements including the new Tabletop Printer
- **USB 2.0** and Serial connectivity included as standard features. Parallel & Ethernet available as options.
- **PowerPrint™** delivers improved print quality and print darkness on multi-part forms by increasing impact energy. Comes standard on P8000 printers with a 1,000 line-per-minute print speed.

MANAGEABLE SAVINGS

The **P8000** Cartridge Printer is a smart purchase

- **Lowest cost of ownership** of any print technology.
- **Durable design minimizes** downtime related to unfavorable environmental conditions.
- **Backwards-compatible cartridge ribbons** reduce inventory management costs.
- **Energy efficient technology** lowers idle power consumption and boosts operating efficiency.

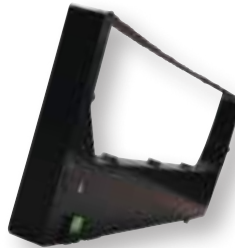
Five Reasons Your Company Needs Line Matrix Printers



In a world of expensive to maintain laser printers it is smart to consider the latest advancement in line matrix cartridge printing before choosing a print technology. Printronix has consistently pioneered new innovations to ensure this technology remains highly competitive and relevant for today's printing applications. Here are five reasons to consider the latest generation of Line Matrix Cartridge printers.

1 Lowest Cost of Ownership

- The average lifespan of a line matrix printer is 7 to 10 years as compared to only 3 years for laser printers.
- Cartridge Ribbons are up to six times less expensive than laser toner cartridges.
- As print volume increases, consumable savings grow dramatically.
- Cartridge ribbons give users up to 20% improvement in consumable cost per page over spool type ribbons used by legacy line printers.



2 Productivity

- Line Matrix printers deliver unmatched, up-time and reliability.
- Document integrity is more easily maintained with continuous forms media as opposed to cut sheets.
- PrintNet Enterprise, our remote printer management utility, delivers visibility and remote control for all network connected devices.

3 Reliable Performance in Any Environment

- Line Matrix printers perform reliably in non-climate controlled environments where temperature, humidity and airborne contaminants cause form feeding and print quality issues for other print technologies.

4 Application Adaptability

- Printronix' OpenPrint technology allows printers to Plug & Play in PDF and PostScript, ERP environments.
- Many Independent Software Vendors provide label design software and ERP solutions that natively support the Printronix language for graphics, text and barcode images.
- Line Matrix remains the best technology for printing multi-part forms, oversize media, labels, card stock, and other non-typical media types.

5 Environmentally Friendly

- When compared to laser printers, Energy Star® certified Line Matrix Printers consume as little as 1/3rd the energy when printing, and 1/7th the energy when in standby mode.
- Throughout their life span, Line Matrix Printers will generate far less landfill waste from consumables, packaging and printer hardware.
- Cartridge ribbons emit none of the fine particulate emissions generated by laser printers.



DISTRIBUTION



AUTOMOTIVE



MANUFACTURING



TRANSPORTATION



FINANCIAL

P8000 Line Matrix Printers

With the new **P8000 Tabletop** line matrix printer, you receive maximum uptime and low total cost of ownership in the smallest footprint available. The Tabletop design provides flexibility to your industrial printing environment and is the industry's best solution when you need to optimize space and seek portability.



The flagship model in the series, the **P8000 Open Pedestal** is a dependable line matrix printer that delivers maximum uptime and lowest total cost of ownership. Its compact size makes it easy to move within your environment and is ready to plug into your network and start printing from day one.



PRINTER CABINET STYLE	Tabletop		Open Pedestal	
Standard Features & Options	P8005 / P8010		P8005 / P8010	
Integrated Print Management	Standard		Standard	
Ribbon Life Monitor	Standard		Standard	
SureStak Power Stacker				
Black back forms paper out sensor	Option		Option	
Rear slide out paper drawer				
Cabinet front paper access				
Extended forms support doors				
High rear paper tray			Available mid-2013	
Low rear paper tray			Standard	
Acoustic shroud			Option	
Dimensions	P8005 / P8010		With Basket	Without Basket
Height	18.3" (464.8 mm)		35.9" (911.8 mm)	35.9" (911.8 mm)
Width	25.8" (655.3 mm)		25.8" (655.3 mm)	25.8" (655.3 mm)
Depth	19.1" (485.1 mm)		29.1" (739.1 mm)	19.1" (485.1 mm)
Printer Weight	100 lbs (45.4 Kg)		115 lbs (52.1 Kg)	115 lbs (52.1 Kg)
Shipping Printer Weight	150 lbs (68 Kg)		165 lbs (74.8 Kg)	165 lbs (74.8 Kg)
Environmental Noise	P8005	P8010	P8005	P8010
Acoustic Noise (dBA) per ISO 7779	64.4	69.4	60.5	65.5
PRINTER MODEL NUMBER	P8005	P8010	P8005	P8010
Print Speed	LPM, upper case/lower case characters		LPM, upper case/lower case characters	
High Speed (Draft)	500/428	1000/856	500/428	1000/856
Data Processing	375/300	750/600	375/300	750/600
Near Letter Quality	200/154	400/306	200/154	400/306
Graphics Speed	Inches (mm) per minute		Inches (mm) per minute	
60 x 48 dpi	63 (1600)	125 (3175)	63 (1600)	125 (3175)
60 x 72 dpi	42 (1067)	83 (2108)	42 (1067)	83 (2108)
90 x 96 dpi	21 (533)	42 (1067)	21 (533)	42 (1067)
Paper Feed Speed	Inches (mm) per second		Inches (mm) per second	
Speed	12 (305)	20 (508)	12 (305)	20 (508)

*Not available at time of printing

The **P8000ZT Zero Tear** is the specialized cartridge line matrix printer choice for customers using pre-printed and serialized documents that require print on demand, single form tear-off usability. The Zero Tear is designed to eliminate wasted forms and reduce operating costs.

Available mid-2013



The **P8000 Enclosed Cabinet** is the preferred choice for print environments where acoustic emissions need to be kept to a minimum. Its modular design, wide selection of paper handling options, and reliable performance make it ideal for office environments or noise adverse areas running large, unattended print applications.



Open Pedestal Zero Tear		Cabinet			
P8005ZT / P8010ZT		P8205 / P8210		P8215 / P8220	
Standard		Standard		Standard	
Standard		Standard		Standard	
Option		Option		Option	
Option		Option		Option	
Option		Option		Option	
Option		Option		Option	
Standard		Option		Option	
With Basket	Without Basket	Cabinet		Cabinet	With SureStak
42.04" (1067.8 mm)	42.04" (1067.8 mm)	40.5" (1028.7 mm)		40.5" (1028.7 mm)	40.5" (1028.7 mm)
25.8" (655.3 mm)	25.8" (655.3 mm)	27" (685.8 mm)		27" (685.8 mm)	27" (685.8 mm)
31.9" (810.2 mm)	19.1" (485.1 mm)	29" (736.6 mm)		29" (736.6 mm)	33" (838.2 mm)
N/A*	N/A*	200 lbs (90.7 Kg)		200 lbs (90.7 Kg)	240 lbs (108.8 Kg)
N/A*	N/A*	265 lbs (120.2 Kg)		265 lbs (120.2 Kg)	300 lbs (136 Kg)
P8005ZT	P8010ZT	P8205	P8210	P8215	P8220
70	70	50	50	52	55
P8005ZT	P8010ZT	P8205	P8210	P8215	P8220
LPM, upper case/lower case characters		LPM, upper case/lower case characters			
500/428	1000/856	500/428	1000/856	1500/1289	2000/1700
375/300	750/600	375/300	750/600	1125/900	1500/1200
200/154	400/306	200/154	400/306	600/459	800/615
Inches (mm) per minute		Inches (mm) per minute			
63 (1600)	125 (3175)	63 (1600)	125 (3175)	187 (4750)	250 (6350)
42 (1067)	83 (2108)	42 (1067)	83 (2108)	127 (3226)	167 (4242)
21 (533)	42 (1067)	21 (533)	42 (1067)	61 (1549)	83 (2108)
Inches (mm) per second		Inches (mm) per second			
12 (305)	20 (508)	12 (305)	20 (508)	25 (635)	39 (991)

CONNECTIVITY

Reliable Connectivity, Seamless Installation and Robust Remote Printer Management



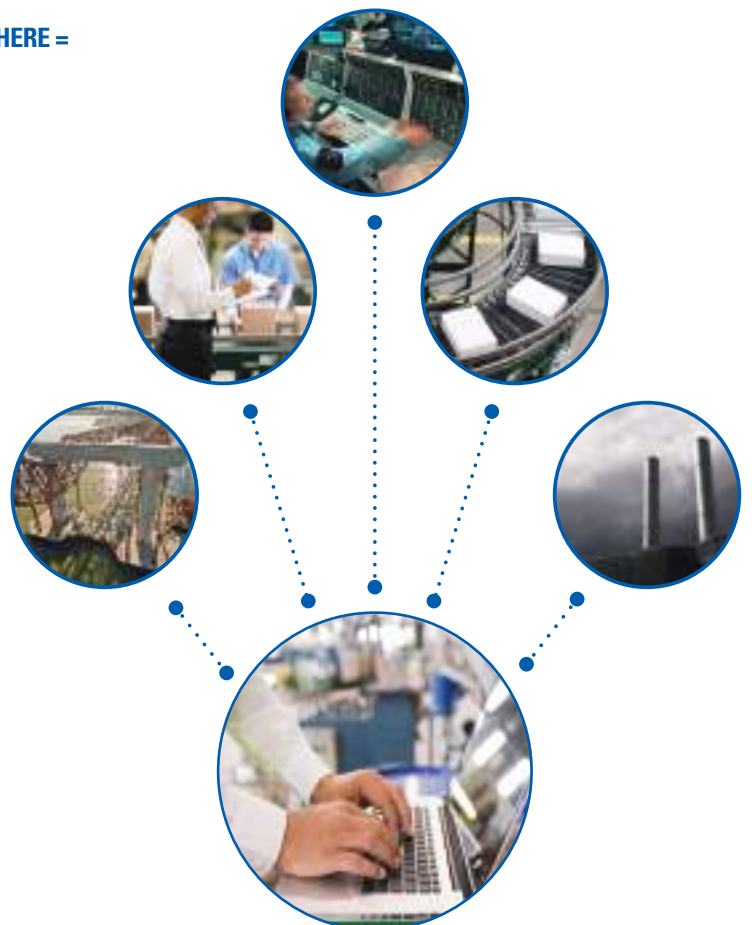
CONTROL YOUR ENTIRE GLOBAL PRINTING NETWORK FROM ANYWHERE =

Achieve higher efficiency and improve your company's productivity with PrintNet Enterprise™ remote printer management software. PrintNet Enterprise is a valuable time-saving tool for your mission critical operation.

PLUG AND PRINT = Printronix provides you with a wide variety of emulations and configuration tools to make the job easier. Installation requires no host changes and allows for easy data streaming. Do you have custom print job files already set up? No problem, PrintNet Enterprise lets you work with the files you have already created.

PRINTNET ENTERPRISE™ = Total control. Your worldwide print operation is at your fingertips with PrintNet Enterprise. By combining the recommended integrated Ethernet adapter and Java-based software, remote printer management extends your reach from anywhere you have a computer and connectivity.

- Configure and monitor printers from any desktop computer and any location in the world
- Designate events and be alerted to printer issues with email, pager or mobile phone alerts
- Complete compatibility with any Printronix product when equipped with the optional Ethernet



ORACLE SAP LINUX WINDOWS

COMPATIBILITY

OpenPrint™ – The World's First PostScript and PDF Line Matrix Printer



Printronix offers the world's only PostScript and PDF® line matrix printer. The OpenPrint Cartridge Series allows the printer to communicate directly with today's modern enterprise resource planning (ERP) environments, including Oracle®, SAP®, Linux® and Windows®. With OpenPrint, PDF or PostScript files can be sent directly to the printer without hard-coding or special drivers. Output quality is improved because it utilizes PostScript image and graphic capabilities as well as sure scan bar code software.

The OpenPrint platform offers our customers an unprecedented opportunity to implement the industrial strength of line matrix technology within most ERP environments. The easy and instant connectivity of PostScript and PDF files enables IT administrators to quickly deploy new forms and business documents to Printronix line matrix printers throughout ERP enterprise operations. OpenPrint technology provides improved fine point text and fonts - from six point to poster size. It also improves the rendering of bar codes within the printer resulting in enhanced form readability and utility. The new P8000 OpenPrint models will be available mid-2013.



P8000 Product Specifications

CONNECTIVITY/INTERFACES

Standard	USB 2.0 and Serial RS-232
Optional	Ethernet - 10/100 Base T Parallel - IEEE-1284 Centronics

CHARACTER PITCH (CHARACTERS PER INCH)

10, 12, 13.3, 15, 16.7, 17.1, 20

LINE SPACING (LINES PER INCH)

6, 8, 10.3, n/72, n/216

GRAPHICS RESOLUTION

180 dpi Horizontal, 144 dpi Vertical (max)

DOT SIZE

16.7 mil (.42mm)

EMULATIONS

Standard	LP+ (Printronix P-Series, P-Series XQ, Serial Matrix, IBM ProPrinter III XL, Epson FX-1050)
Optional	ANSI, IPDS, PCL 2, DEC LG, TN5250/ TN3270, Graphics emulation PGL and VGL

CHARACTER SETS

99 plus character sets including ECMA Latin 1, DEC Multinational, IBM Code Page 437 and 850, OCR A, OCR B, UTF8 encoded Unicode

CHARACTER STYLES

Bold, italic, double wide, double high, overstrike, underline, subscript and superscript

FONTS

NLQ Serif, NLQ Sans Serif, Data Processing, High Speed, OCR A, OCR B

BAR CODES

30 resident symbologies, including Code 39, EAN 8/13, UPC A/E, Intelligent Mail, Postnet, Royal Mail, Interleaved 2 of 5, PDF 417, Data Matrix

PRINTER SOFTWARE

Printronix PrintNet Enterprise remote management software, SAP device support

PRINTER DRIVERS

Microsoft Window XP/Vista/2003/2008/7, Linux

ENVIRONMENTAL ADVANTAGE

ENERGY STAR qualified

POWER VOLTAGE

AC input range 100-240 VAC, 50/60 HZ

POWER CONSUMPTION (ENERGY STAR)

Less than 5 watts

POWER CONSUMPTION (TYPICAL-MAXIMUM)

• P8005 / P8205	280 watts	Max 320 watts
• P8010 / P8210	300 watts	Max 320 watts
• P8215	435 watts	Max 601 watts
• P8220	450 watts	Max 601 watts

OPERATING TEMPERATURE

Environmental Operating Temperature 50° to 104° F, 10° to 40° C

PAPER TYPE

Continuous, fan folded, edge-perforation

PRINT WIDTH

13.6" (345mm)

MEDIA WIDTH

3" (76mm) to 17" (432mm)

MEDIA COPIES

Up to 6 parts; up to 4 parts for Zero Tear models

MEDIA WEIGHT

- 15* to 100 lbs up to 0.025" thickness
- 56 to 163 gm/m2 up to 0.64mm thickness

**(18 lbs minimum weight on Zero Tear model)*

MTBF

10,000 hours at 25% duty cycle and 25% page density

CONSUMABLE/RIBBONS

Standard Life Cartridge Ribbon 17,000 pages

Extended Life Cartridge Ribbon 30,000 pages

Page yield based on ISO LSA Page, 8.5" x 11" letter-size, approximately 5% coverage



Visit the Printronix website
for product specifications
on OpenPrint models:
www.printronix.com

PRINTRONIX®

15345 BARRANCA PARKWAY, IRVINE, CA 92618
1-800-665-6210 • WWW.PRINTRONIX.COM

© 2013 Printronix, Inc. All rights reserved. Printronix and all product names, numbers and logos are trademarks or registered trademarks of Printronix, Inc. Product appearance and/or specifications are subject to change without notice. Windows is a registered trademark of Microsoft Corporation in the United States and other countries. All other trademarks, product names and company names or logos herein, are the property of their respective owners. PTX-3003 (1/13)